

**8<sup>th</sup> Grade Parent:** These instructions detail the process of installing a TI-84+ graphing calculator on your home computer. This software provides a tool that your child routinely uses in class. This is an optional software provided by an online company free of charge that is not affiliated with Waller ISD.

## Wabbit TI-84 Plus Silver Edition Emulator Instructions

The following steps will allow you to download the TI-84+ calculator to your computer.

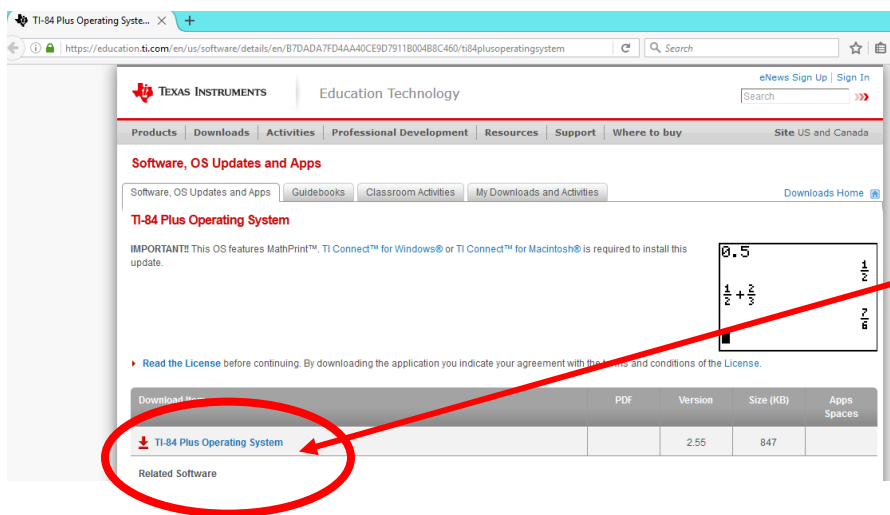
The video link below will give you directions to assist you in this process. Copy and paste the URL in your browser.

<https://www.youtube.com/watch?v=IM2JZOIdCBI>

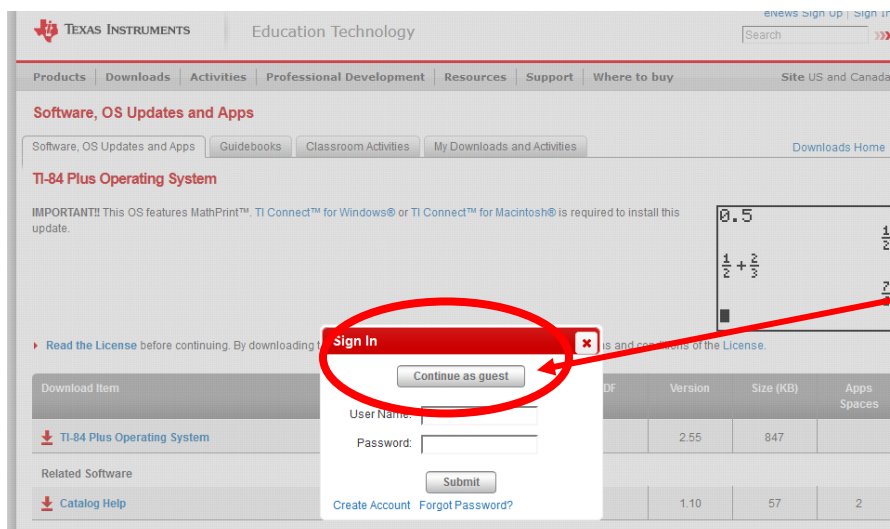
First: You will need to download the TI-84+ Operating System to your desktop. This program will not open but is necessary to be accessible on the desktop for the emulator to work.

Click the Link Below:

<https://education.ti.com/en/us/software/details/en/B7DADA7FD4AA40CE9D7911B004B8C460/ti84plusoperatingsystem>




Click to download the TI-84 Plus Operating System 2.55 (must be 2.55)



Select "Continue as guest"

You can keep the program in your downloads folder or save it to the desktop. If you save it to the desktop, the program will have this icon. It will not open or run.

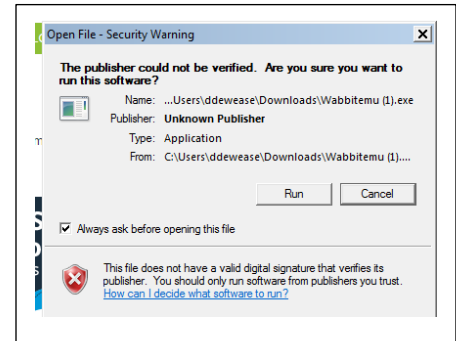
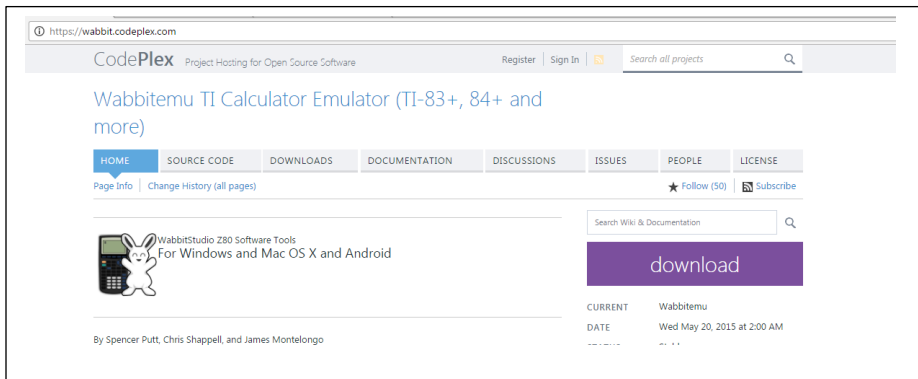


TI84Plus\_OS255.8Xu

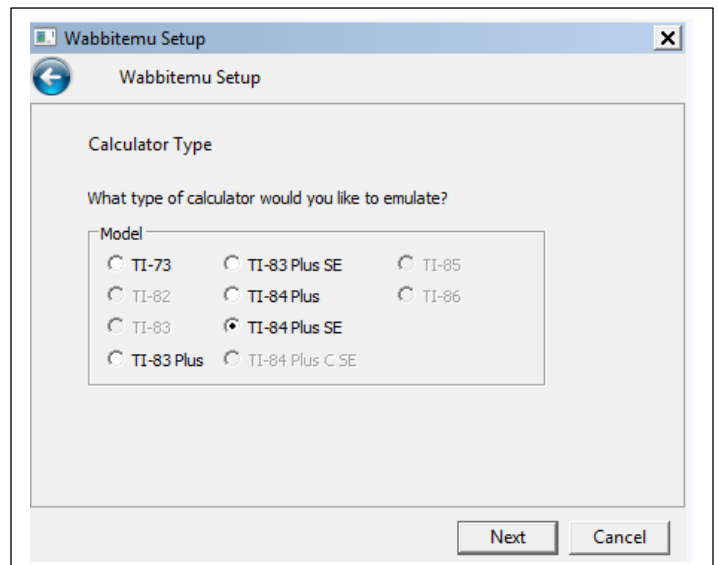
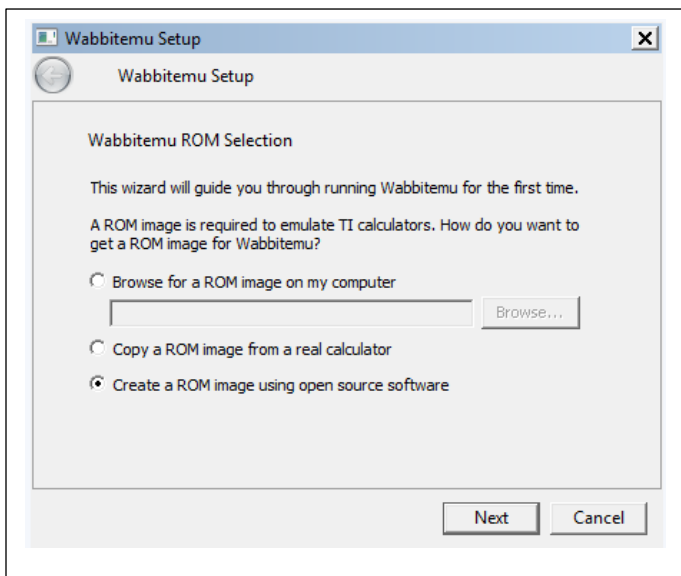
# Wabbit TI-84 Plus Silver Edition Emulator Instructions

Go to this website <http://wabbit.codeplex.com/>

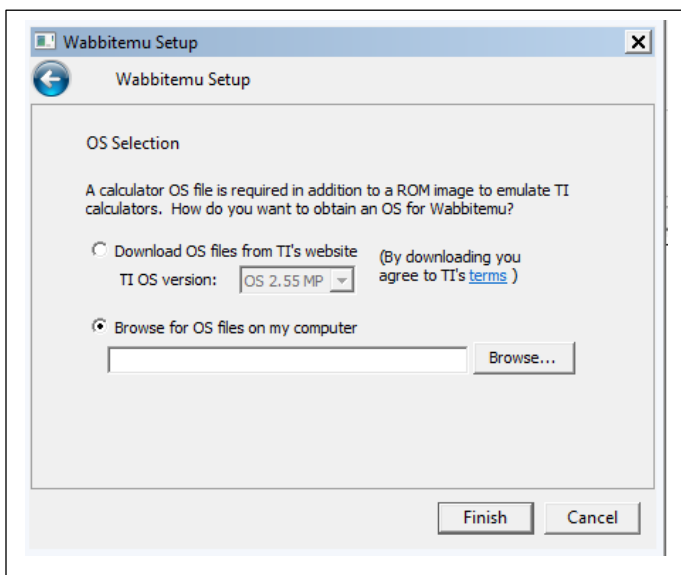
Download Wabbitemu. You will be asked to agree to the license. Run Wabbitemu.exe



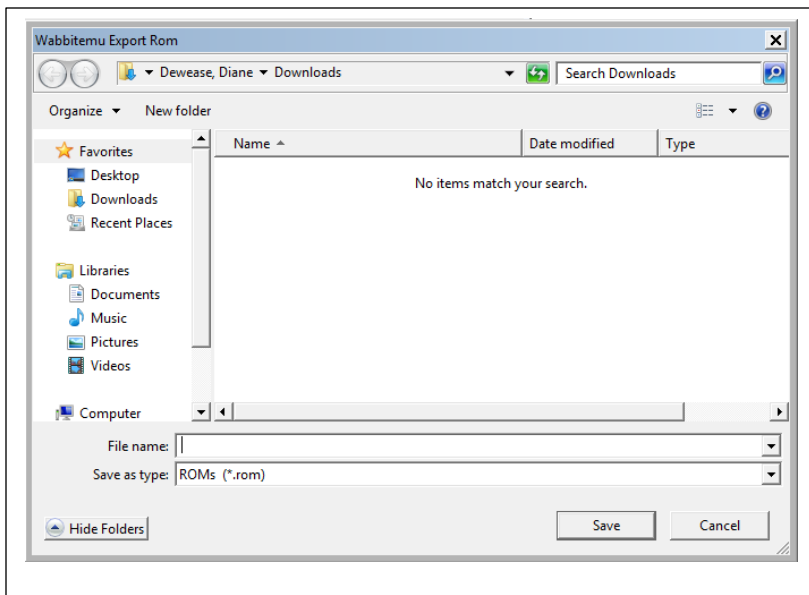
Select "Create a ROM image using open source software." Then, select the TI-84 Plus SE



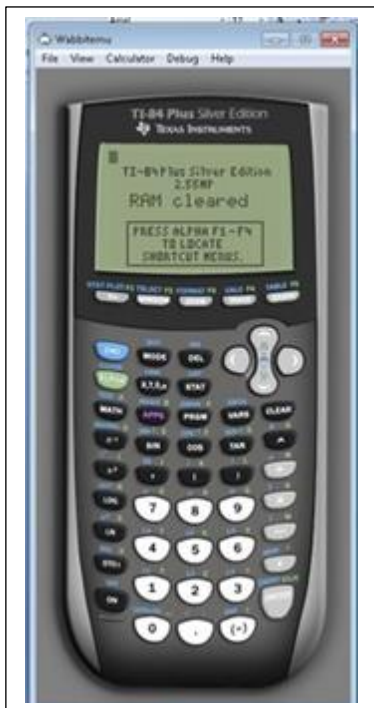
OS Selection - Browse for TI-84 Plus OS file you saved on your computer. Select the OS and then select Finish.



Save as a ROM file (I named mine Wabbit84PlusROM).



The Wabbitemu should appear on your desktop.



Right click on the white rabbit. Select "Pin this program to the taskbar."